

---

# USER MANUAL

---



(888)-744-8727  
<https://www.bigpigtrap.com>

# CONTENTS

LIST OF TRAP COMPONENTS .....	4
USING A TRAILER TO STORE AND TRANSPORT THE TRAP .....	7
HIGHWAY TRANSPORT .....	7
TRAP ASSEMBLY .....	8
INSERTING THE TRAP LEGS .....	8
ARRANGING THE PANELS .....	8
INSTALLING THE PULLEYS ONTO THE CROSS MEMBERS .....	9
INSTALLING THE WINCH .....	10
INSTALLING THE ELECTRONIC LATCH .....	10
PLACING THE PULLEY CROSS MEMBER ON TOP .....	10
SETTING THE TRAP .....	11
INSTALLING THE WINCH CABLES.....	12
INSTALLING THE TRIGGER CABLES .....	<b>ERROR! BOOKMARK NOT DEFINED.</b>
TEST-DROPPING THE TRAP .....	16
SAFETY FIRST .....	17
RECOMMENDED MAINTENANCE.....	17
PRODUCT WARRANTY .....	18
LIMITED WARRANTY ON DROP TRAP SYSTEM.....	18

---

## SAFETY FIRST

---

- Failure to review and understand the entire manual prior to assembly or use could result in **SERIOUS INJURY OR DEATH** to you or someone else.
- This manual contains important instructions, warnings, and safety procedures. Make sure you read and understand all procedures **BEFORE** assembling or using the Big Pig Trap Systems.

### Warning

- **CRUSH HAZARD:** This device may be used with an electronic device to remotely trigger a gate, trap, swing door, and/or other heavy device, which can cause serious injury or death. **ALWAYS** ensure the area is clear **BEFORE** connecting the wires and/or turning on the power.
- **CHILD SAFETY HAZARD:** This product can cause serious injury or death. **ALWAYS KEEP CHILDREN AWAY** from equipment.

### Warning

- The Big Pig Drop Trap can cause serious injury or death to individuals if proper procedures are not followed.
- **ALWAYS** ensure the safety pins are in place on both sides of the trap before entering or exiting the trap with the trap raised.
- **NEVER** enter the raised trap without the safety pins in place, not even to bait the trap.

### Warning

- **ALWAYS** use proper personal safety gear when assembling, testing, or disassembling the Big Pig Trap.
- Inspect all equipment for damage and normal wear prior to use. Immediately replace any broken or damaged parts.
- When transporting the Big Pig Trap System, secure the straps and check often.
- Follow all applicable local, state, and federal laws pertaining to trapping and transport of traps.

### Warning

- When testing or operating the trap make sure the area is clear **BEFORE** doing so. Failure to clear the area may result in serious injury or death.
- **NEVER** attempt to manually drop the trap: Always use the HogEye Camera System to perform test drops with the trap.
- **ALWAYS** keep children and pets away from the trap.
- **ALWAYS** when not in use, the trap should be in the deployed position. Trap should be resting on the ground without the winch cable attached.



## LIST OF TRAP COMPONENTS

The Big Pig Drop Trap comes on a pallet with one Standard Kit Bucket. The following components are attached to the pallet and are illustrated in the photos that follow:

- 4 curved cage panels
  - These are equal in length and height, but 2 have large collars and 2 have small collars. The safety pins are inside the kit bucket.
- 1 four-way cross member receiver
  - Includes a predrilled latch post, trap trigger tabs, and a hinged chain set
- 4 cross members (2 with bolt holes and 2 without)
- 4 trap legs (2 with holes for safety pins and 2 without)

The following components are included in the BPT Standard Kit Bucket:

- Winch and winch cable
- Winch handle
- Gate chain
- 2 Trigger cables
- 2 Safety pins
- 2 Latch bolts
- 2 Winch bolts
- 2 Cross member pins
- 18 Trap bolts

To help with assembly, we've identified all the parts in photos on the following pages.



*BPT Drop Trap on Pallet*





*4 curved, equal length cage panels*



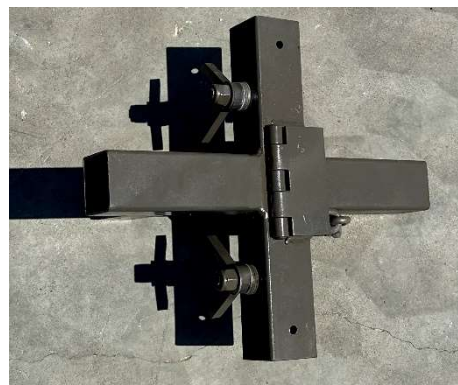
*2 panels with large collars  
2 panels with small collars*



*Top: 2 cross  
members with  
pulley and bolt  
holes*

*Bottom: 2 cross  
members  
without holes*

*Four-way cross member receiver*



*Left: 2 trap  
legs with holes  
for safety pin*



*Right: 2 trap  
legs without  
holes*







*Bucket*



*Winch with cable and handle*

*BPT Standard Kit*



*2 equal length trigger cables*



*Electronic Latch  
(Included with HogEye Camera System)*



*2 winch bolts, 2 latch bolts, 2 cross member pins (silver),  
2 safety pins (gold), 18 trap bolts*

## USING A TRAILER TO STORE AND TRANSPORT THE TRAP

### Highway Transport

The BPT suspended trap can be transported easily by disassembling the cage into individual panels. The trap can then be stacked with the jump rings down, or the panels can be stacked flat on top of one another. In either case, remove the legs, cross members, and four-way cross member receiver and secure them separately.

**Tip:** Do Not transport the trap assembled. This can lead to trap damage!



*Transporting the trap, disassembled*



## TRAP ASSEMBLY

### Inserting the Trap Legs ①

The trap legs should be inserted into the cage panel trap leg collars so that the flat “foot” is on the ground, and the straight pipe end and jump ring are up. All trap legs are the same length, but two have predrilled holes. The legs with holes are inserted into the cage panels with the smaller hooked leg collars.



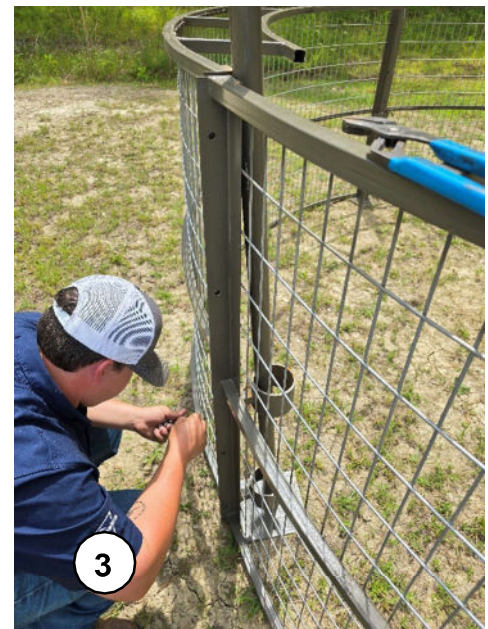
### Arranging the Panels ②

Arrange the panels in a circle, paying close attention to the trap leg collars on each panel. The large collars should be on opposite sides of the trap, facing each other, and the small collars with cable hooks should also be on opposite sides, facing each other.



### Bolting the Panels Together ③

There are 4 predrilled holes in each panel end for bolting the trap together. Using these holes, loosely bolt the cage panels together with the trap bolts. Make sure the footprint of the trap is completely round, then go around a second time to tighten all of the trap bolts. Once this step is completed, you'll have a completely circular trap cage with the trap leg feet on the ground and the pipe end of the legs and the jump rings standing up.



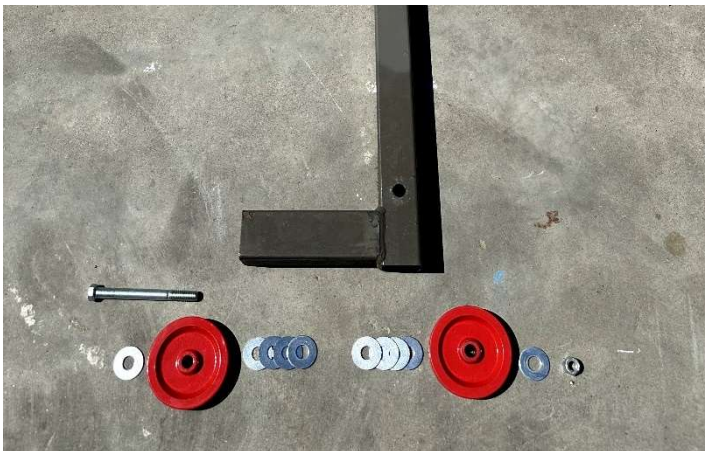


**Installing the Pulleys onto the Cross members ④**

The pulley (red-rollers), along with their bolts and washers, will be included in the kit bucket. To install the pulleys on the crossmembers please abide by the followings steps:

1. Remove the nut, outside washer, the first pulley, and four of the inside washers. This should leave four inside washers, one pulley, and one outside washer remaining on the bolt.
2. Insert the bolt through the pre-drilled hole in one of the two designated cross-members.
3. Place the four inside washers, pulley, and outside washer back on the bolt (in that order), along with the nut.
4. Tighten the nut all the way down until snug, THEN back the nut off just enough so that the pulleys spin freely.

Repeat steps 1-4 to install the second set of red-rollers onto the other designated cross member.



### Installing the Winch ⑤

Using the winch bolts, fasten the winch to the pulley cross member with the predrilled holes. Attach the handle on the opposite side of the 4-way trigger mechanism. **This is important** — it ensures the handle won't be in the way when setting the trap.



### Placing the Pulley Cross Member on Top ⑦

All cross members are straight on the 4-way side and have a downward “L” shape on the opposite end. These ends are hollow, and the upward-facing trap leg ends fit inside them. Place the completed cross members on top of the trap, fitting the hollow cross member ends over the open end of the trap legs.

Make sure the cross member is seated on the correct trap legs, the ones inserted into the small panel collars with cable hooks. The cross member will slide firmly into position when both ends are seated on top of the leg ends. The winch should be located on top of the cross member.

### Installing the Electronic Latch ⑥

Install the latch, using the latch bolts that came with your latch. The downward-facing 4-way “latch post” is predrilled to accept the latch bolts. Align the holes of this post with the latch, so the latch faces up, toward the top of the 4-way.





### Inserting the Remaining Trap Cross Members ⑧

Insert the straight end of the remaining trap cross members into the 4-way (no bolts required). The other end of the cross member fits on the trap legs that are inserted into the large panel collars. The result is a fully constructed cage with braces extending across the trap, which form a “+” when seen from above. The 4-way will center the braces, and the winch will be offset to one side.



## SETTING THE TRAP

Enter the trap cage through the man gate. ①

After entering the trap, shut the man gate and secure it with the chain and carabiner provided. Failure to complete this step will leave an escape route for future captured pigs. ②

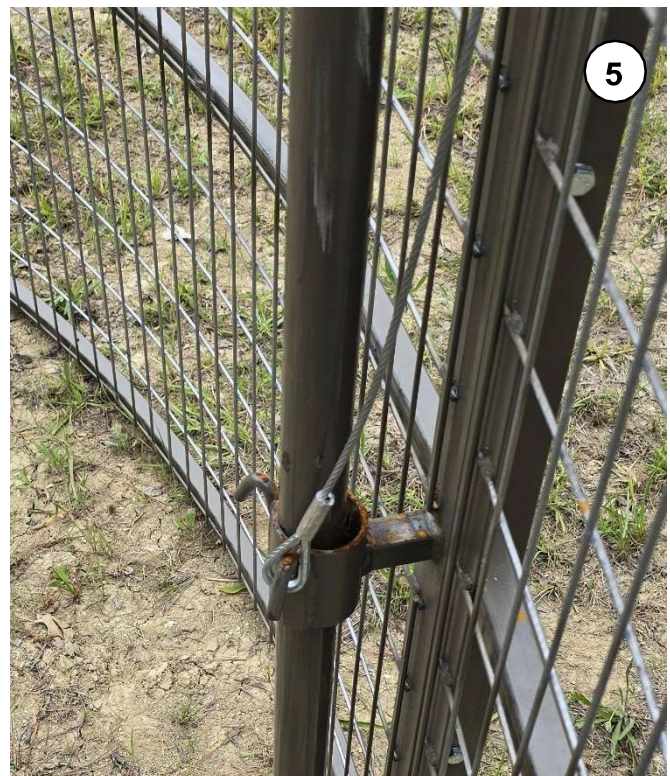




### Installing the Winch Cables

The two winch cables are not the same length, because the winch is offset — it's closer to one side of the trap than the other.

- ③ Install the shorter winch cable on the closer side and the longer one on the farther side. This will ensure the trap is lifted evenly and easily. Each winch cable end is crimped to form a loop. These loop ends will be used to lift and distribute the weight.
- ④ Make sure the actual cable is run over the pulley to utilize the winch.
- ⑤ The winch cable loop should be run over the pulley, all the way down to the cable hook on the panel collar. When set, this allows you to lift the cage portion of the trap. It slides straight up, riding on the stationary trap legs. Make sure the winch is in the forward position and winch the cage.





⑥ The bottom of the cage must be raised to a height that clears the predrilled safety pin holes located on the trap legs. Once it is above this height, **immediately push the safety pins into the safety pin holes.**



Inserting the safety pins ensures that the trap will stop if it is accidentally deployed. Do not enter or exit the trap by stepping under the trap cage unless the safety pins are inserted.

**Tip:** Trap will not drop if the safety pins are inserted. When you are done baiting the trap and ready to leave the trap site make sure to remove the pins.

### Installing the Trigger Cables ⑦

The trigger cables are of equal length, and each one has a loop end and a chain end.

- To set the trigger cables, run the chain end on the opposite side of the winch cable, over the free pulley, and down to the hook on the opposite side of the cage panel cable hook.
- To install the loop end, make sure the 4-way hinged trigger stay is in the open position. The hinge should be flipped back, and the attached chain should be held clear of the latch and the two trigger tabs.
- Hold the two trigger tabs upright. They should be positioned so that one end is straight up and down, and the other end is parallel to the top cross members.
- Slide the loop of the gate cables onto the upright portion of the trigger tabs and hold them in place.
- Pull the chain portion of the 4-way hinge back, folding the hinge plate over the parallel side of the trigger tabs. Holding the chain down to keep tension on the trigger tabs, insert the chain portion of the hinge plate into the upward facing latch and close. The latch will hold the hinged portion down and keep tension on the trigger tabs, thus holding the trigger cables in place.



⑧ Once the trigger cables are in place, set the winch to reverse and turn the handle. This removes the tension and creates enough slack to unhook the winch cables from the collar hooks. **Once you complete this step, the weight of the trap will be completely supported by the trigger cables.** The winch cables must be free from the collar cable hooks to ensure proper function of the trap.



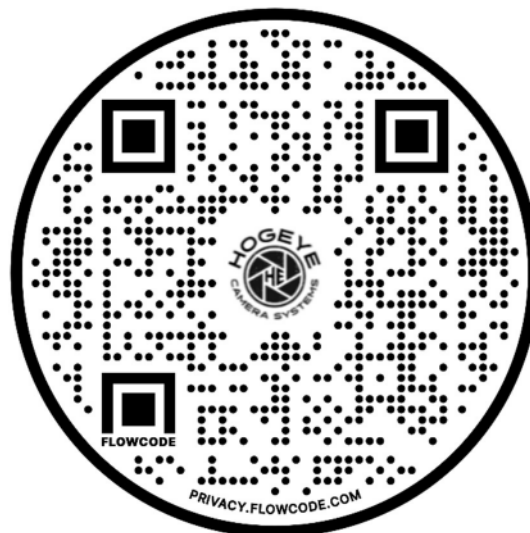
**Check to make sure the safety pins are in place.**



⑨ Lead the camera gate cable over the top of the trap and attach it to the electronic latch. Ensure that the safety pins are in place and the man gate is secured. Exit the trap by stepping underneath the trap cage. Once everyone is outside the trap and clear of it, remove the safety pins. The trap is set.



For more information and videos about setting the trap, scan this QR code:



## TEST-DROPPING THE TRAP



**With the safety pins in place**, enter the trap by stepping under the trap cage.

Plug the camera gate cable male end into the female end of the electronic latch plug. When successfully set, there should be a noticeable snap. The gate cable should be led over the top of the trap, not underneath it. This will ensure that it is not damaged, either by pigs or by the weight of the trap when it drops.

Exit the trap.

Remove the safety pins.

Use the HogEye Camera Management application to view a live feed of the trap. **Stand well clear of the trap** and command the drop. The latch will release, and the trap will drop. Ensure that the drop was smooth and free of interference.

Go through the man gate to reset the trap. **Ensure that the safety pins are in place before exiting under the trap cage.** After you exit the trap, remove the safety pins and ensure that the man gate is secured.

**\*Warning – Stay clear of the trap before testing the drop. Failure to do so may result in serious injury or death.**



## SAFETY FIRST

The BPT suspended trap weighs approximately 500 pounds. **It can cause serious injury or death** if the operator is not clear of the cage when it falls. The following guidelines should always be followed:

- Always **make sure the safety pins are set on both sides** before entering or exiting the trap.
- Never enter or exit the trap without safety pins in place on both sides of the trap. **This includes baiting the trap!**
- Users should **always stand clear and ensure that others are clear** when testing or dropping the trap.
- Always **keep children and pets away from the trap**, even when safety pins are in place.
- **Keep the trap in the deployed position when not in use.** The trap cage should rest on the ground, without weight on the winch.
- **Do not attempt manual drops** with the trap. Always use the HogEye camera to test drop the trap.

## Recommended Maintenance

- Check all trap legs to make sure they are free of corrosion and foreign debris when the trap is assembled.
- Lubricate the trap legs and cage panel collars every time the trap is assembled.
- Check all cage panels and trap legs, to make sure they are not bent or damaged.
- Inspect the trap winch cable regularly. Make sure it's in good condition before setting the trap.
- Make sure the latch plugs are not exposed to excess moisture.
- Check the latch plug wiring. Make sure wires are not frayed or damaged.

## PRODUCT WARRANTY

### LIMITED WARRANTY ON DROP TRAP SYSTEM

BACKWOODS SOLUTIONS, LLC (hereinafter referred to as “BWS”), a limited liability company organized under the laws of the State of Mississippi, and with a principal place of business located in Mississippi, extends this Limited Warranty to the end-user who has originally purchased the Big Pig Trap System (hereinafter referred to as the “Product”) from BWS or an authorized distributor of BWS products.

### LIMITED WARRANTY NOTICES

This Limited Warranty gives you specific legal rights, and you may also have other rights, which vary from state to state.

This Limited Warranty can also be found in the documentation provided with the Product.

BWS warrants that, during the Warranty Period, the Product will be free from defects in materials and workmanship.

To the extent not prohibited by law, this warranty is exclusive and in lieu of all other warranties, oral, written, statutory, express, or implied. Except for the express warranties contained in this Limited Warranty statement and to the extent not prohibited by law, we disclaim all other warranties, expressed or implied, statutory or otherwise, including without limitation, the warranties of merchantability and fitness for a particular purpose. Some states do not allow disclaimers of implied warranties, so this disclaimer may not apply to you. To the extent such warranties cannot be disclaimed under the laws of your jurisdiction, we limit the duration and remedies of such warranties to the duration of this express Limited Warranty.

Some states do not allow limitations on how long an implied warranty lasts, so the above limitation on the same may not apply to you.

Our responsibility for defective parts is limited to repair, replacement, or refund as described below in this Warranty Statement.

### TERMS OF LIMITED WARRANTY

#### Who May Use This Warranty

Only the end-user who originally purchased the Product may use this warranty. It does not extend to any subsequent owner or other transferee of the Product. The end-user who originally purchased the Product and is, as a result, entitled to use this warranty according to the terms stated herein, may be further referred to herein as “You” or “Your.”

#### What This Warranty Covers

This Limited Warranty covers defects in materials and workmanship of the Product for the Warranty Period as defined below.

#### What This Warranty Does Not Cover

This Limited Warranty does not cover any damage caused by the following:

- transportation;
- improper storage;
- improper use;
- failure to follow Product instructions or to perform any preventive maintenance;
- modifications to the Product;
- unauthorized repair;
- normal wear and tear; or
- external causes such as acts of God, accidents, abuse, or other actions or events beyond the reasonable control of BWS.



### **Period of Coverage**

This Limited Warranty begins on the date You receive the trap and establish a corresponding documentation of receipt, or one year from the date of Your purchase of the Product, whichever is earlier, and lasts for one year (referred to as the “Warranty Period”). The Warranty Period is not extended if BWS repairs or replaces the Product. BWS reserves the right to change the availability of this Limited Warranty at its discretion, but any changes will not be retroactive.

### **Your Remedies Under This Warranty**

With respect to any defect found in the Product during the Warranty Period, BWS will, in its sole discretion, take either of the following actions:

repair or replace the Product or the defective part of the Product; or refund the purchase price of the Product.

If BWS elects to repair or replace the defective Product or part of the Product, BWS will pay for shipping and handling fees to return the repaired or replacement Product or part of the Product to You.

### **How to Obtain Warranty Service**

To obtain warranty service, you must take one of the following actions to make a valid report of defective materials or workmanship during the Warranty Period:

call BWS at (888)-744-8727; or

send an email to [info@backwoodssolutions.com](mailto:info@backwoodssolutions.com).

The following information must be given to BWS to make a valid report of defective materials or workmanship under this Limited Warranty:

Your name and contact information;

the date you purchased the Product; and

details regarding the perceived defect.

Upon Your report of defective materials or workmanship, BWS shall be entitled to inspect or inquire into the circumstances of the report to determine whether warranty service is appropriate.

### **Limitation of Liability**

The remedies described above are your sole and exclusive remedies and BWS’ entire liability for any breach of this Limited Warranty. BWS’ liability shall under no circumstances exceed the actual amount paid by You for the defective Product, nor shall BWS under any circumstance be liable for any consequential, incidental, special, or punitive damages or losses, whether direct or indirect.

Some states do not allow the exclusion or limitation of incidental or consequential damages, so the above limitation or exclusion may not apply to you.

### **Severability**

If any part of this Limited Warranty is declared by a court to be invalid, illegal, or otherwise unenforceable, the validity, legality, and enforceability of the remaining provisions will not be affected or impaired thereby unless the provisions deemed invalid, illegal, or unenforceable are material and go to the essence of this Limited Warranty. Should any material portion of this Limited Warranty be deemed invalid, illegal, or unenforceable, the terms of this Limited Warranty shall be modified so as to give effect, as closely as possible, to the original intent of this Limited Warranty.



**(888) 744-8727**

**<https://www.bigpigtrap.com>**