
USER MANUAL



Backwoods Solutions LLC
info@backwoodssolutions.com
(662) 788-2024
<https://www.bigpigtrap.com>

Contents

List of Trap Components	1
Panels	1
Gates	1
Steel Hinge Pins	2
Electronic Rotary Latches	2
Trailer	3
Using the Trailer to Store and Transport the Trap	3
Trap Assembly	4
Trap Configurations	5
Electronics	6
Setting and Testing the Electronic Latch and Gate	6
Required Maintenance	7
Product Warranty	8

SAFETY FIRST

- Failure to review and understand the entire manual prior to assembly or use could result in **SERIOUS INJURY OR DEATH** to you or someone else.
- This manual contains important instructions, warnings, and safety procedures. Make sure you read and understand all procedures **BEFORE** assembling or using the Big Pig Trap Systems.

Warning

- **CRUSH HAZARD:** This device may be used with an electronic device to remotely trigger a gate, trap, swing door, and/or other heavy device, which can cause serious injury or death. **ALWAYS** ensure the area is clear **BEFORE** connecting the wires and/or turning on the power.
- **CHILD SAFETY HAZARD:** This product can cause serious injury or death. **KEEP CHILDREN AWAY** from equipment at all times.

Warning

- When assembling the gates, special caution should be given to the sliding portion of the gate. Failure to do so can result in serious injury or death.
- When fully assembled **NEVER** pass under a raised gate(s), users should **ALWAYS** enter the trap by removing the pins and opening a panel.

Warning

- When testing or operating the gate or gates make sure the area is clear **BEFORE** doing so. Failure to clear the area may result in serious injury or death.

Warning

- **ALWAYS** use proper personal safety gear when assembling, testing, or disassembling the Big Pig Trap.
- Inspect all equipment for damage and normal wear prior to use. Immediately replace any broken or damaged parts.
- When transporting the Big Pig Trap System, secure the straps and check often.
- Follow all applicable local, state, and federal laws pertaining to trapping and transport of traps.

LIST OF TRAP COMPONENTS

The standard trap package includes the following:

- 8 panels with hinges
- 2 gates with hinges and electronic latches
- Steel hinge pins
- D.O.T.-compliant trap trailer (optional)

Panels

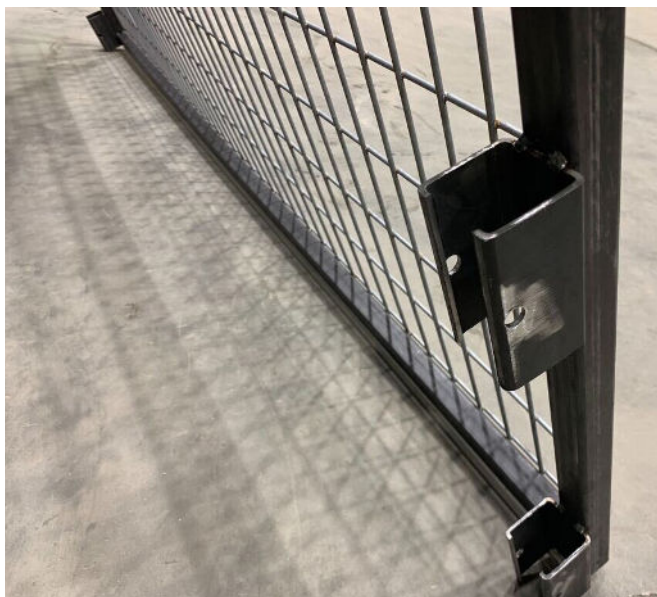
Each panel has an upper hinge and a lower hinge on each side.

When the hinges are aligned, you can slide a pin through the hinge to assemble the trap.

Gates

The gates are shipped pre-assembled and can be disassembled for easier handling. Each gate has a guide frame and a guillotine/slide portion.

Two removable pins allow a user to remove the gate slide from the gate frame.



Removable gate.



Gate with gate slide (middle) and outer frame.

Gates come with an electronic latch already attached unless specified by the user. The latch is attached in the middle of the upper frame brace. If you order the trap without the latch attached, you'll find two predrilled holes on the upper frame brace for attaching it.



Hinges are located on both panels and gates.



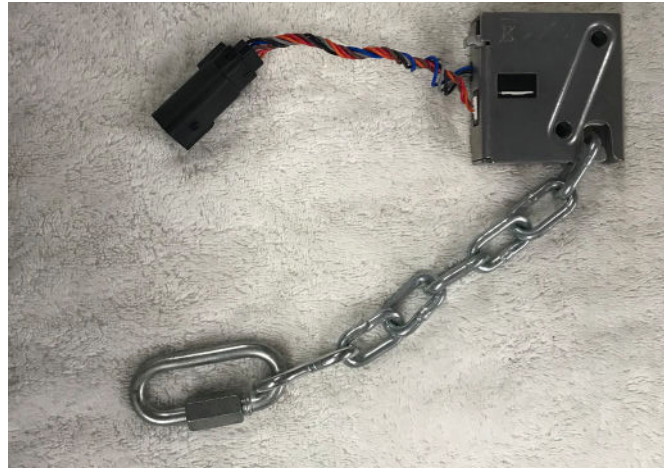
Predrilled holes for attaching electronic latch.



Correct placement of hinge pin with 90-degree top facing out

Electronic Rotary Latches

An electronic rotary latch is provided for every gate in the system. Each latch has a female plug for automated triggering and a manual lever for testing/manually triggering the latch. To deploy multiple gates requires an automated trap camera, which connects to the female plug. A gate chain is provided, along with a lap link or carabiner to affix the chain to the bottom of the gate slide and the latch.



Electronic latch with lap link (gate end) and gate chain seated in latch

Steel Hinge Pins

Steel pins are provided to connect the hinges of each panel or gate. Once pins are in place, they align and connect adjacent panels and gates. Pins have a 90° top and a straight bottom. The 90° top of the pin should always face the outside of the trap.



Steel hinge pin

TRAILER

A D.O.T. compliant trap trailer is available for trap storage and transport. The trailer has a 2-inch ball and may be attached to a vehicle or ATV for transport. It contains vertical structural beams with horizontal hanging arms to allow users to easily suspend and secure panels and gates. A pin storage container is also attached to the trailer for easy organization and transport of trap pins. An optional mounted spare tire is available upon request.

Using the Trailer to Store and Transport the Trap

The trailer allows you to hang panels and gates as shown in the illustration. The trailer is designed so that the arms fit under the second bar of each panel.



The BPT Trap Trailer

When you load the trailer, make sure that you place an equal number of panels and gates on each side, to keep the trailer balanced. If you have an uneven number of gates or panels, load the trailer so the weight on each side is as equal as possible.

Ratchet straps are used to secure the trap on the trailer for transport or storage. The straps should go around the trap horizontally, not vertically, to keep the trap components secure during transport.

The panels have been designed so that one person can easily load and unload them from the trap trailer. Removing the slide portion first makes it easier for one person to load and unload the gates.

Warning
 When gates are fully assembled, special caution should be given to the sliding portion of the gate. Failure to do so may result in injuries.

TRAP ASSEMBLY

Connect two panels by placing the steel pins into the two hinges located on each side. Panels and gates should be pinned together with the wire side facing the inside of the trap.

Once a pair of panels (or a panel and a gate) have been pinned together, they will stand up, as long as you place them at an angle from each other.



Assembled trap

Trap Configurations

The panel trap system allows the user to configure the trap for a variety of unique trapping situations. Gates and panels may be set in different shapes and placements to maximize the user’s objectives.

We recommend that you minimize sharp angles in your trap configuration. Gates may be placed side-by-side or at opposite ends, in a walk-through configuration. When set up with an automated or camera-operated system, all gates are triggered and dropped simultaneously.



Side-by-side gate configuration



Side-by-side trap configuration (shown with optional tarp gates)

ELECTRONICS

An electronic latch is attached to every gate in the system. The latches provided include a female plug (wired) that attaches to an automated system.

If you need to replace a latch, use hand tools for the job, and be sure not to overtighten. Using an impact driver will compress the latch's internal mechanisms and may prevent it from triggering when commanded.

The gate chain should be attached to the bottom of the slide portion of the gate with a lap link or carabiner. The free end of the chain will be closed in the latch while the gate is in a raised position.

Setting and Testing the Electronic Latch and Gate

Always test the latches and gates after initial setup and before leaving a new trapping location.

Before hooking the gate to the latch, test all latches, both manually and electronically, to confirm correct operation.

Next, with the gate in a raised position, attach the gate chain to the latch arm and close the latch. Confirm that the latch will support the weight of the gate, and that the gate remains open, in a raised position.

Warning
Stay clear of the gate before testing the latch or gate. Failure to do so may result in serious injury.



The electronic latch

REQUIRED MAINTENANCE

Examine all gate slides, making sure they are free of corrosion and foreign debris when you assemble the trap.

Each time you assemble the trap, lubricate the sliding portions of the trap gate.

Examine the panel and gate hinges. Make sure they're undamaged and free from foreign debris.

Check the trap pins, making sure they fit securely into the hinges.

Check the latch plugs for damage or corrosion. Make sure they are not exposed to excess moisture.

Check the latch plug wiring, to make sure it is not frayed or damaged.

PRODUCT WARRANTY

LIMITED WARRANTY ON PANEL TRAP SYSTEM

BACKWOODS SOLUTIONS, LLC (hereinafter referred to as "BWS"), a limited liability company organized under the laws of the State of Mississippi, and with a principal place of business located at 1105 Old HWY 45, Scooba, Mississippi 39358, extends this Limited Warranty to the end-user who has originally purchased the Big Pig Trap System (hereinafter referred to as the "Product") from BWS or an authorized distributor of BWS products.

LIMITED WARRANTY NOTICES

This Limited Warranty gives you specific legal rights, and you may also have other rights, which vary from state to state.

This Limited Warranty can also be found in the documentation provided with the Product.

BWS warrants that, during the Warranty Period, the Product will be free from defects in materials and workmanship.

To the extent not prohibited by law, this warranty is exclusive and in lieu of all other warranties, oral, written, statutory, express, or implied. Except for the express warranties contained in this Limited Warranty statement and to the extent not prohibited by law, we disclaim all other warranties, expressed or implied, statutory or otherwise, including without limitation, the warranties of merchantability and fitness for a particular purpose. Some states do not allow disclaimers of implied warranties, so this disclaimer may not apply to you. To the extent such warranties cannot be disclaimed under the laws of your jurisdiction, we limit the duration and remedies of such warranties to the duration of this express Limited Warranty.

Some states do not allow limitations on how long an implied warranty lasts, so the above limitation on the same may not apply to you.

Our responsibility for defective parts is limited to repair, replacement, or refund as described below in this Warranty Statement.

TERMS OF LIMITED WARRANTY

Who May Use This Warranty

Only the end-user who originally purchased the product may use this warranty. It does not extend to any subsequent owner or other transferee of the product. The end-user who originally purchased the product and is, as a result, entitled to use this warranty according to the terms stated herein, may be further referred to herein as "You" or "Your."

What This Warranty Covers

This Limited Warranty covers defects in materials and workmanship of the Product for the Warranty Period as defined below.

What This Warranty Does Not Cover

This Limited Warranty does not cover any damage caused by the following:

- transportation;
- improper storage;
- improper use;
- failure to follow product instructions or perform any preventive maintenance;
- modifications to the product:
- unauthorized repair;
- normal wear and tear; or
- external causes such as acts of God, accidents, abuse, or other actions or events beyond the reasonable control of BWS.

Period of Coverage

This Limited Warranty begins on the date you receive the trap and establish a corresponding documentation of receipt, or one year from the date of Your purchase of the product, whichever is earlier,

and lasts for one year (referred to as the “Warranty Period”). The Warranty Period is not extended if BWS repairs or replaces the Product. BWS reserves the right to change the availability of this Limited Warranty at its discretion, but any changes will not be retroactive.

Your Remedies Under This Warranty

With respect to any defect found in the product during the Warranty Period, BWS will, in its sole discretion, take either of the following actions:

repair or replace the product or the defective part of the product; or

refund the purchase price of the product.

If BWS elects to repair or replace the defective product or part of the product, BWS will pay for shipping and handling fees to return the repaired or replacement product or part of the product to you.

How to Obtain Warranty Service

To obtain warranty service, you must take one of the following actions to make a valid report of defective materials or workmanship during the Warranty Period:

Call BWS at (662) 788-2024; or

Send an email to
info@backwoodssolutions.com.

The following information must be given to BWS to make a valid report of defective materials or workmanship under this Limited Warranty:

Your name and contact information;

the date you purchased the product; and

details regarding the perceived defect.

Upon your report of defective materials or workmanship, BWS shall be entitled to inspect or inquire into the circumstances of the report to determine whether warranty service is appropriate.

Limitation of Liability

The remedies described above are your sole and exclusive remedies and BWS’ entire liability for any breach of this Limited Warranty. BWS’ liability shall under no circumstances exceed the actual amount paid by you for the defective product, nor shall BWS under any circumstance be liable for any consequential, incidental, special, or punitive damages or losses, whether direct or indirect.

Some states do not allow the exclusion or limitation of incidental or consequential damages, so the above limitation or exclusion may not apply to you.

Severability

If any part of this Limited Warranty is declared by a court to be invalid, illegal, or otherwise unenforceable, the validity, legality, and enforceability of the remaining provisions will not be affected or impaired thereby unless the provisions deemed invalid, illegal, or unenforceable are material and go to the essence of this Limited Warranty. Should any material portion of this Limited Warranty be deemed invalid, illegal, or unenforceable, the terms of this Limited Warranty shall be modified so as to give effect, as closely as possible, to the original intent of this Limited Warranty.



Backwoods Solutions LLC
info@backwoodssolutions.com
(662) 788-2024
<https://www.bigpigtrap.com>